

## System data

### MEMORY

MemTotal: 2035072 kB

### CPU

processor : 0  
model name : Intel(R) Core(TM)2 Duo CPU E6750 @ 2.66GHz  
cache size : 4096 KB  
physical id : 0  
siblings : 2  
core id : 0  
cpu cores : 2  
bogomips : 5337.11

processor : 1  
model name : Intel(R) Core(TM)2 Duo CPU E6750 @ 2.66GHz  
cache size : 4096 KB  
physical id : 0  
siblings : 2  
core id : 1  
cpu cores : 2  
bogomips : 5334.93

## The test

time 100 test runs and measure overhead (time – sleep time), once with system at rest and a second time with system under load

test:

- open program
- sleep for 1 second
- kill program

system load:

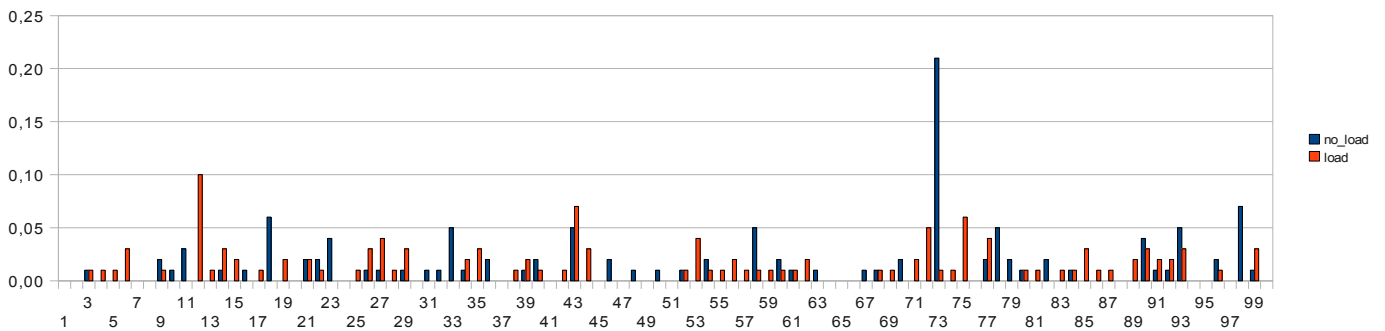
- a ~262MB dd from /dev/urandom to a file
- file compression with bzip2
- file decompression with bunzip2

# KERNEL - no preemption

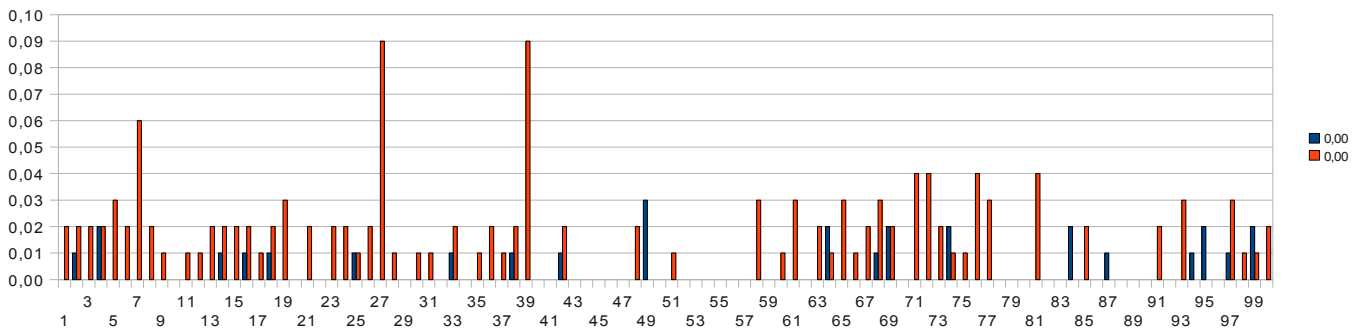
Debian Lenny GNU/Linux 2.6.26-5 SMP x86\_64  
re-configured with a 300Hz timer (no preemption)

	<i>no_load</i>	<i>load</i>	<i>delta</i>
<i>min</i>	<b>0,00</b>	<b>0,00</b>	<b>-0,20</b>
<i>max</i>	<b>0,21</b>	<b>0,10</b>	<b>0,10</b>
<i>media</i>	<b>0,0074</b>	<b>0,0130</b>	<b>0,0057</b>

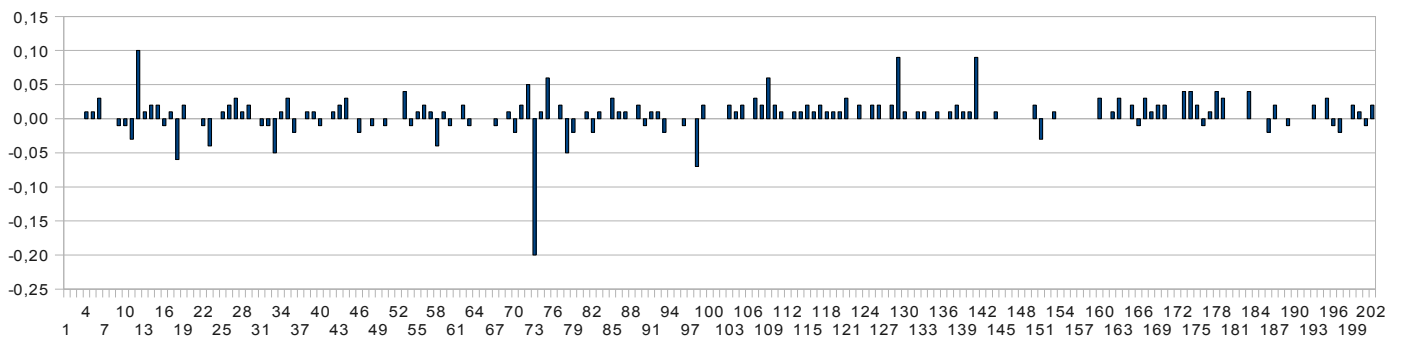
gedit



xterm



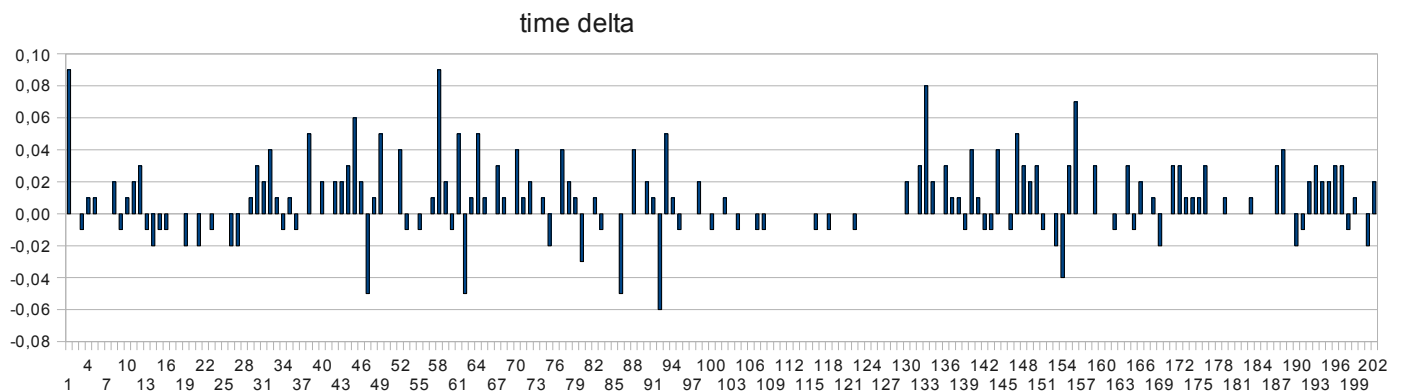
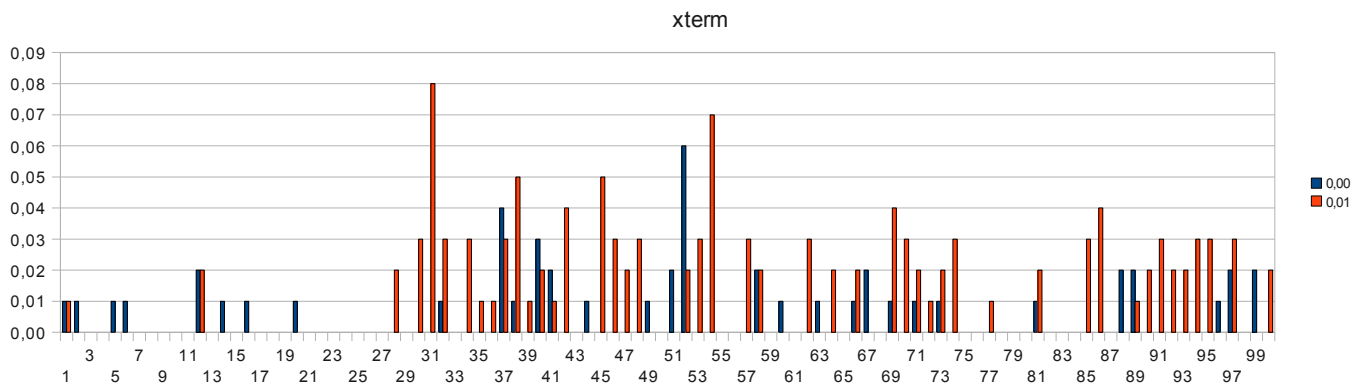
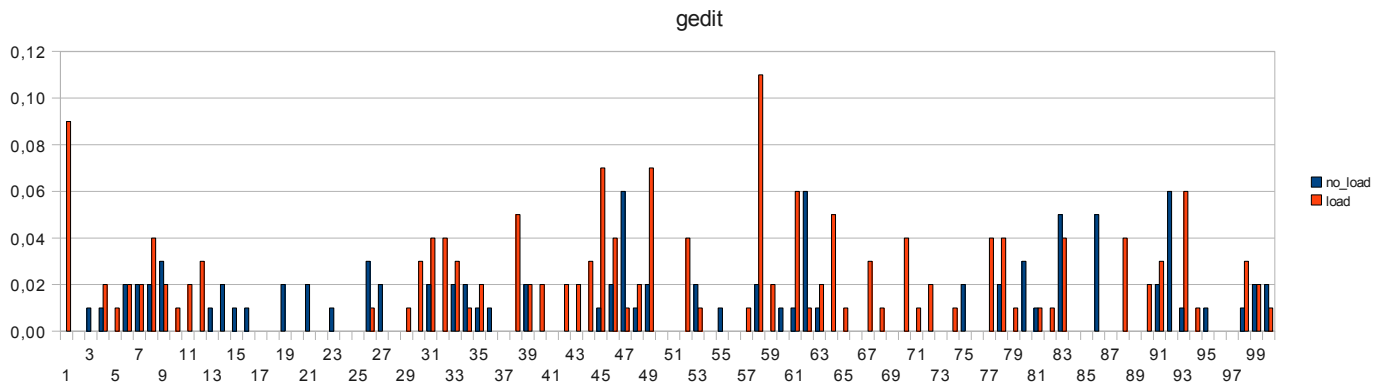
time delta



# KERNEL - voluntary preemption

Debian Lenny GNU/Linux 2.6.26-5 SMP x86\_64  
re-configured with a 300Hz timer and voluntary preemption

	<i>no_load</i>	<i>load</i>	<i>delta</i>
<i>min</i>	<b>0,00</b>	<b>0,00</b>	<b>-0,06</b>
<i>max</i>	<b>0,06</b>	<b>0,11</b>	<b>0,09</b>
<i>media</i>	<b>0,0072</b>	<b>0,0145</b>	<b>0,0073</b>

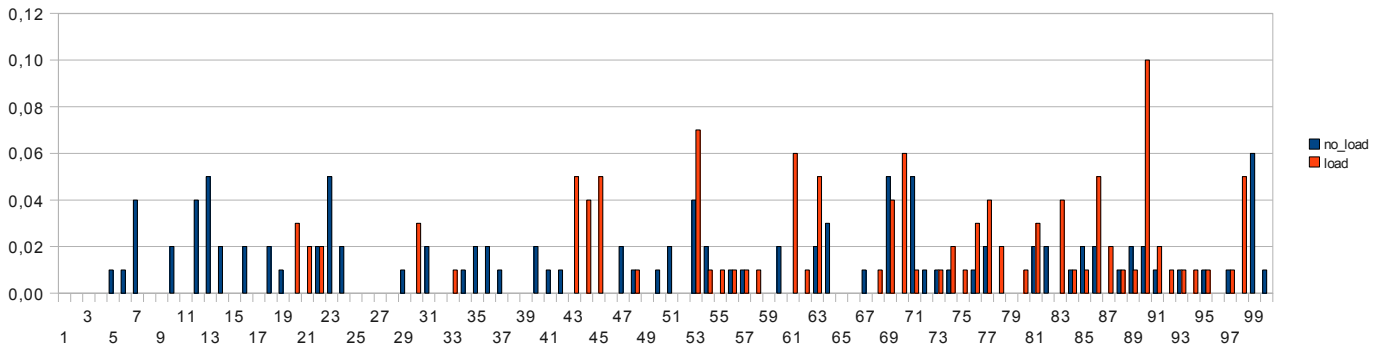


# KERNEL - forced preemption

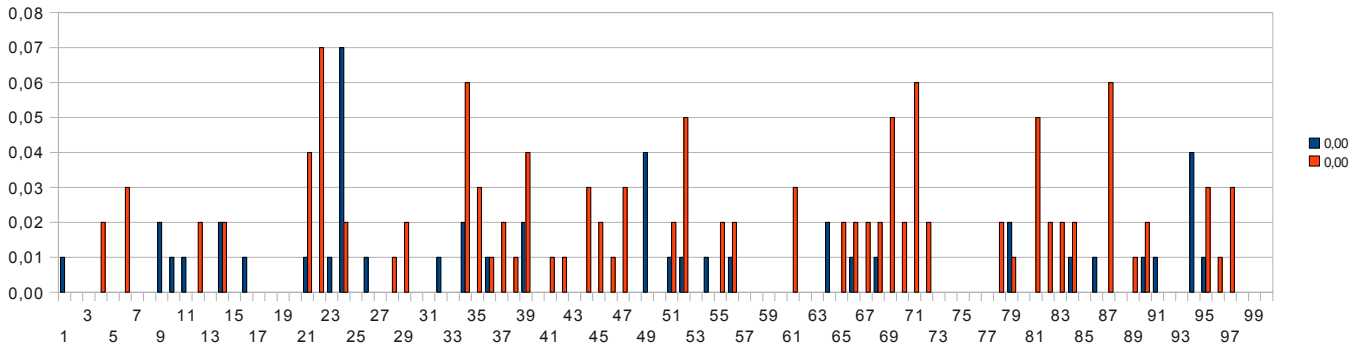
Debian Lenny GNU/Linux 2.6.26-5 SMP x86\_64  
re-configured with a 300Hz timer and forced preemption

	<i>no_load</i>	<i>load</i>	<i>delta</i>
<i>min</i>	<b>0,00</b>	<b>0,00</b>	<b>-0,06</b>
<i>max</i>	<b>0,07</b>	<b>0,10</b>	<b>0,08</b>
<i>media</i>	<b>0,0078</b>	<b>0,0118</b>	<b>0,0040</b>

gedit



xterm



time delta

